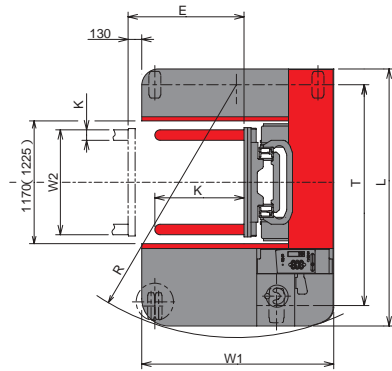
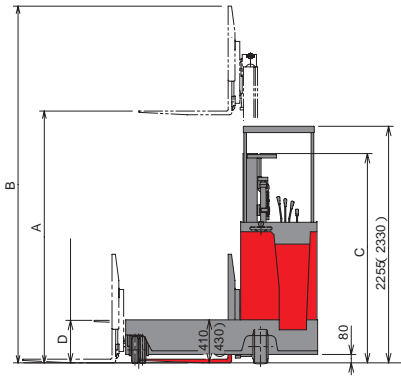


REACH TRUCK SIDE-FORK TYPE FBS-75 Series

● Standard Specifications



() : FBS20-FBS25

Models		FBS10-75	FBS15-75	FBS20-75	FBS25-75		
Performance	Capacity	kg	1000	1500	2000	2500	
	Load Center	mm	500				
	Lifting Height	A mm	3000				
	Free Lift	D mm	405		400		
	Lift Speed	Laden	mm/s	340	310	290	270
		Unladen	mm/s	540	540	490	490
	Travel Speed	Laden	km/h	7.5		8.0	7.5
		Unladen	km/h	8.5		9.0	9.0
	Min. Turning Radius	R mm	2350		2580		
	Overall Length	L mm	2450		2690		
Dimensions	Overall Width	W1 mm	1830		2000		
	Overall Height	Mast Lowered	C mm	1995		2050	
		Mast Extended	B mm	4000			
	Overhead Guard Height	mm	2255		2330		
	Tilt Angle (Upwards/Downwards)	deg	5 / 3				
	Fork Length	K mm	850		920		
	Fork Spread	W2 mm	200 ~ 1000		300 ~ 1100		
	Outrigger Height	mm	410		430		
	Reach Stroke	E mm	1105		1185		
	Wheelbase	T mm	2110		2220		
Road Clearance	mm	80					
Service Weight (w/o Battery)	kg	2420	2415	3065	3115		
Tyres	Load (2pcs.)		Urethane 254 x 114		Urethane 267 x 135		
	Drive (1pc.)		Rubber 330 x 145		Rubber 380 x 165		
	Caster (2pcs.)		Urethane 254 x 65		Urethane 267 x 75		
Battery	STD	V/Ah	48 / 201	48 / 280	48 / 320		
	OPT	V/Ah	48 / 240	48 / 320 · 48 / 370	48 / 370		
Motor	Travel	60min. Rating	kw		4.3		
		Control	IGBT Inverter Control				
	Hydraulic	5min. Rating	kw		8.8		
		Control	IGBT Inverter Control				
	Power Steering	60min. Rating	kw		0.3		
		Control	FET Chopper Control				
Charger	Input	/V	Automatic Stationary Charger				
	Capacity	kVA	3.8	4.7	3 / 200		
			3.8	4.7	4.7		

ECO-LOGISTICS since 1937

NICHYU

NIPPON YUSOKI CO., LTD.

1-1, 2-chome, Higashikotari, Nagaokakyo-shi, Kyoto 617-8585 Japan
 Phone: +81-75-956-8622 Fax: +81-75-955-0480
 URL: <http://www.nichiyunet.co.jp/>



JQA-QM3889
 JQA-EM4909

All specifications are confirmed based on manufacturer's terms and conditions.
 All specifications are subject to change without notice in the interest of continued improvement or modifications.

CAT. No. OSD046-2, 3000/0606/(SK) Printed in Japan
 Printed on 100% recycled paper.

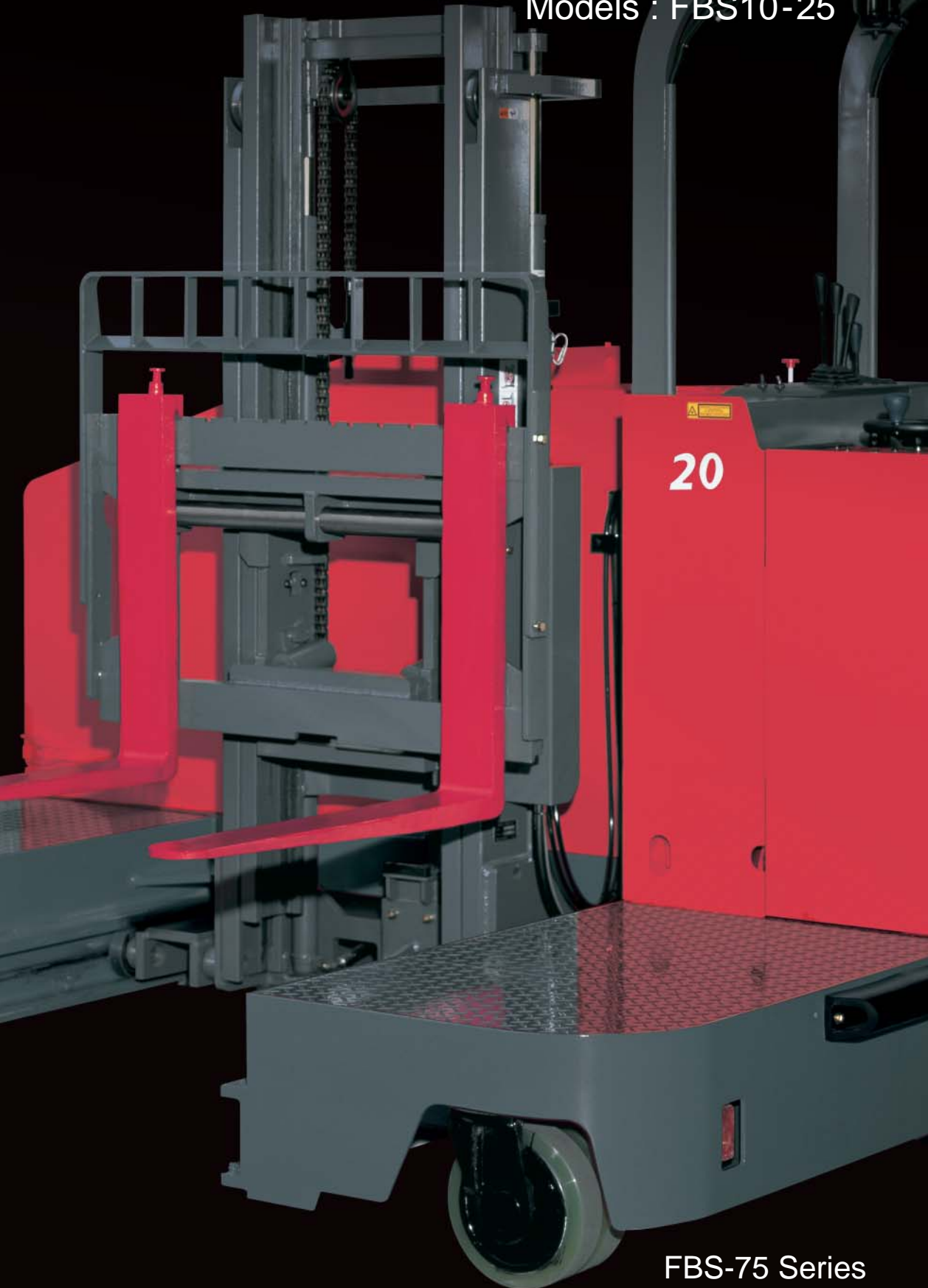
Electric Reach Forklift Trucks

Platter

SIDE-FORK TYPE

Models : FBS10-25

PLATTER



FBS-75 Series

**Ideal for rolled steel, timber, aluminum sashes,
rolled carpets and other elongated loads**

Platter reach truck side fork type



Advanced Performance and Control

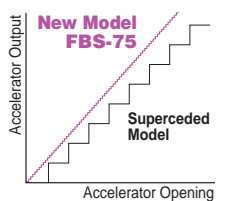
SICOS-AC : A multifunction centralized control system offering exceptional AC control

This system incorporates a new type of controller fully tuned for compatibility with AC systems. This controller features more powerful and advanced capabilities while integrating travel and hydraulic operations with electric power steering. What's more, the new AC motor and IGBT inverter provide smoother, more powerful forklift operation and control. It's the most efficient system you've ever experienced.



Dramatically Improved Inching Operation

The SICOS-AC control system enables exceptionally precise speed adjustments. It dramatically improves inching during fine acceleration, fork operation and other operations.

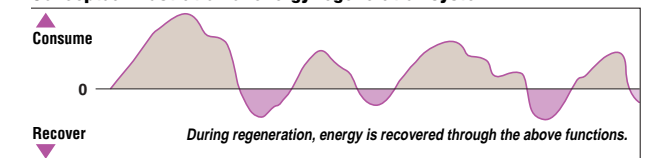


Energy-Saving Design

Includes a variety of power regeneration functions that extend operation time while limiting consumption of battery power.

- Switchback regeneration
- Braking regeneration
- Accelerator off regeneration
- Inclined travel speed controlled regeneration
- Lift tilt reach regeneration

Conceptual illustration of energy regeneration system



Basic performance that meets your needs

Traveling Speed



Lifting Speed

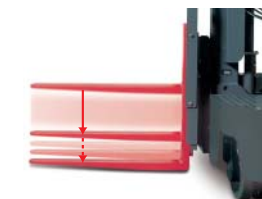


Data: FBS15 (unladen)

Advanced Safety and Comfort

Mast soft-landing cylinder & Shock-absorbing mast

To eliminate any shock as the forks are lowered, this innovative feature automatically slows the forks just before they contact the ground. Moreover, the shock-absorption feature relieves any shock resulting from friction while lifting a duplex or triplex mast.



Small-diameter steering wheel

The small diameter steering wheel reduces operator fatigue during repeated material handling operations, less steering is required for maneuverability.



Neutral Safety and Auto Power-Off Function

No truck functions are enabled if the accelerator lever or hydraulic lever is being operated when the key switch is turned on. What's more, when the truck has been idle for 15 minutes, all power to the truck is automatically turned off.



Fully Automatic Computer-Controlled Battery Charger

To begin charging, the operator need only push the start button. The system automatically determines the remaining battery power and ensures the optimum charge.



※ truck with option